


OFFICIAL VISITOR GUIDE

PORTSMOUTH

A woman with long blonde hair, wearing a purple and black patterned tank top and black shorts, stands on a pebbly beach with her arms outstretched. She is wearing red and black sneakers. In the background, there is a long pier extending into the sea under a clear blue sky. The text 'Put the Wind in your Sails' is overlaid in a large, white, serif font.

Put
the
Wind
in your
Sails

visitportsmouth.co.uk

[#WindInYourSails](https://www.instagram.com/WindInYourSails)

 **PORTSMOUTH
HISTORIC
DOCKYARD**



**Book online:
historicdockyard.co.uk**

NEW TICKETS NOW INCLUDE THE MARY ROSE

**EVERYTHING
IS SHIP SHAPE!**

**SO PUT THE WIND
BACK IN YOUR SAILS**

**AND IMMERSE YOURSELF
AMONGST OUR NATIONAL
MARITIME TREASURES**



THE
NATIONAL
MUSEUM



Put the wind in your sails with a visit to Portsmouth

With a perfect location on England's south coast, Portsmouth is home to world-class attractions, fabulous shopping, amazing events and a fantastic cultural and creative offer. Add to this an array of evening entertainment, mouth-watering food and great places to stay, and you can see why Portsmouth is the top choice for a short break or day visit.

Enjoy the breath-taking views from the iconic Spinnaker Tower, then stay on the waterfront with a visit to Gunwharf Quays to shop at over 90 premium designer outlets and eat at one of 30 cosmopolitan bars and restaurants.

A short walk takes you to Portsmouth Historic Dockyard, home to the finest maritime heritage in the world, including the historic ships HMS Victory, Mary Rose, HMS Warrior 1860 and M.33, along with the National Museum of the Royal Navy.

Stroll through the cobbled streets of Old Portsmouth and walk along the waterfront to Southsea where you will find miles of beach and seafront attractions. Visit Henry VIII's castle and The D-Day Story – now including the massive landing craft LCT 7074.

Enjoy Portsmouth's great open spaces, harbours and nature reserves – ideal for blowing away the cobwebs and getting closer to nature.

Portsmouth has great literary connections. Discover more about the city's Sherlock Holmes connection at Portsmouth Museum and Art Gallery and visit the birthplace of the great author, Charles Dickens.

As the UK's only island city, home to great sailing, the Royal Navy and an unparalleled collection of maritime heritage, Portsmouth has always had a love affair with the sea.

HMS Queen Elizabeth and HMS Prince of Wales, the Royal Navy's new aircraft carriers, are both based in Portsmouth. If you are lucky, you may time your visit when one of these is in port and available to view from the water.



Spinnaker Tower
© Dave T by the Sea
www.davetbythesea.co.uk



**CHECK
BEFORE
YOU
VISIT!**

Plan your visit

We hope you find this guide helpful and informative and that you enjoy your next visit to Portsmouth.

Now more than ever it is important you double check that the places you want to visit, events you want to attend and activities you want to take part in are going ahead as advertised. A quick check online or phone call with individual businesses before you visit is the best way to get current information and ensure you avoid disappointment.

If you need some additional assistance contact our Visitor Information Service:
023 9282 6722 / vis@portsmouthcc.gov.uk

We endeavour to keep our website as up-to-date as possible. It is the best place to find out about forthcoming events and all things Portsmouth: **visitportsmouth.co.uk**

Improving coastal defences

Work has started on a major project to build new coastal defences to protect the city from flooding for the next 100 years. This project will improve the public realm and the setting of many of the historic and cultural features that make our seafront unique. These works may mean some disruption to vehicle and pedestrian access in the seafront area.

48 hours in the city

With world-class attractions, a packed programme of year-round events and great activities to try out, you'd be hard pushed to fit everything you want to do in Portsmouth into just 48 hours. So if you're visiting for just one weekend, we've created a guide so you can squeeze the most out of your short break.

Day one

🕒 1pm – Spinnaker Tower

There are few better ways to kick off your visit to Portsmouth than a trip to the view decks of the Spinnaker Tower. From the vantage point 100 metres above sea level you can look out across the city you're geared up to explore. If the journey made you peckish, there's also food to enjoy at The Clouds café.

🕒 3pm – Gunwharf Quays

With the Spinnaker Tower located within the Gunwharf Quays complex, it'd be remiss not to do a little shopping whilst you're there, right?! In addition to the 90 big brand outlets offering discount deals you'll find coffee shops, bars and restaurants – to keep your energy levels up or reward you for bagging some bargains.

🕒 5pm – Old Portsmouth

Take the short walk into Old Portsmouth. This historic quarter is today awash with great pubs offering local produce and quality ales. Afterwards, a trip through the lamplit, cobbled streets ends day one in style.





1

Day two

🕒 10am – Portsmouth Historic Dockyard

Our advice is to start today with a good breakfast – you’ll need it! Portsmouth Historic Dockyard has loads to explore, from Admiral Lord Nelson’s flagship HMS Victory, to the iron-hulled HMS Warrior 1860 – once the world’s most fearsome ship, but one that never fired a shot in anger. There’s also the Mary Rose museum, where you can see the ship’s remains as well as the huge collection of Tudor artefacts rescued from the sea bed. One ticket gets you entry to all this and more, so you’ll need to allow plenty of time to enjoy it all.

🕒 3pm – Southsea Seafront

It wouldn’t be a trip to Portsmouth without seeing the sea. Head along to Southsea Seafront where you can enjoy fresh air and wonderful views all year round. You can enjoy views of the ever-changing seascape, as well as the wonders of Southsea Castle and the ever-popular Common.

🕒 5pm – Evening entertainment

Finish your day by taking the weight off and enjoying Portsmouth’s evening entertainment. There’s cuisine from around the world to enjoy at the city’s restaurants – you certainly won’t go hungry. Afterwards, why not enjoy a show at the Kings Theatre or New Theatre Royal, or see what’s on at the Guildhall? There’s also a diverse programme at the Wedgewood Rooms and Groundlings Theatre, as well as live music at many city pubs.



5



6



7



8

Day three

🕒 10am – The D-Day Story

Squeeze a bit more history into your visit with a trip to The D-Day Story. Immersive visuals and arresting personal accounts let you see D-Day through the eyes of those who took part. You can also step aboard a Landing Craft Tank, to take in the scope of these huge vessels that made the journey.

🕒 12pm – Southsea Castle

End your trip by following in the footsteps of Henry VIII at Southsea Castle. It was here the notorious king watched his beloved Mary Rose sink. Stand on the ramparts to enjoy your final views of Portsmouth before setting off home to plot your next visit.



1. Spinnaker Tower
2. Gunwharf Quays
3. The Bridge Tavern, Old Portsmouth
4. The Still and West, Old Portsmouth
5. HMS Warrior, Portsmouth Historic Dockyard
6. Southsea Castle
7. The Portsmouth Guildhall
8. The D-Day Story



The big 4

Spinnaker Tower

The Spinnaker Tower stands at 170 metres tall, offering breath-taking 23 mile views over Portsmouth Harbour, the city, the Solent, the South Downs and the Isle of Wight.

The iconic structure is a popular destination boasting a high speed lift up to the view decks. Venture across the thrilling glass Sky Walk at 100 metres above sea level; discover stories behind the surrounding sites with informative touch screen displays; breathe in the view from the open air 'Sky Garden'; relax with High Tea in The Clouds (pre-booking required); and enjoy delicious meals in the Waterfront Café.

Thrill seekers can book on to one of the Tower's 100 metre abseil days.

spinnakertower.co.uk



1. The Clouds Cafe, Spinnaker Tower
2. Viewing deck and Sky Walk, Spinnaker Tower
3. Gunwharf Quays
4. Kate Spade, Gunwharf Quays





Gunwharf Quays

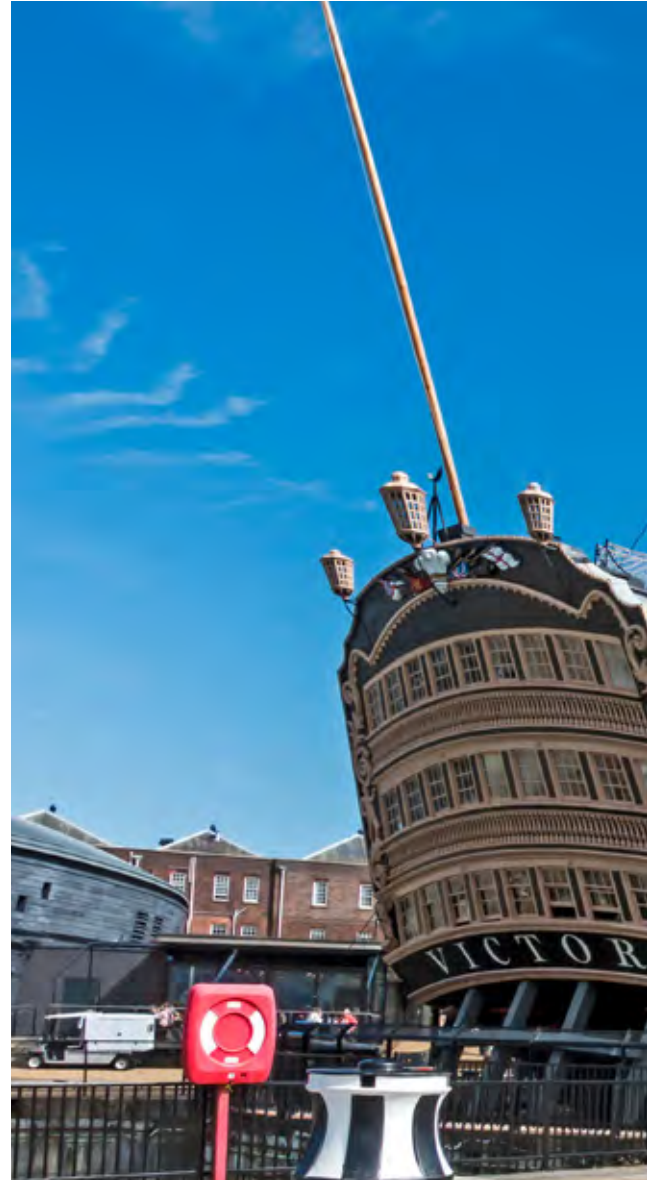
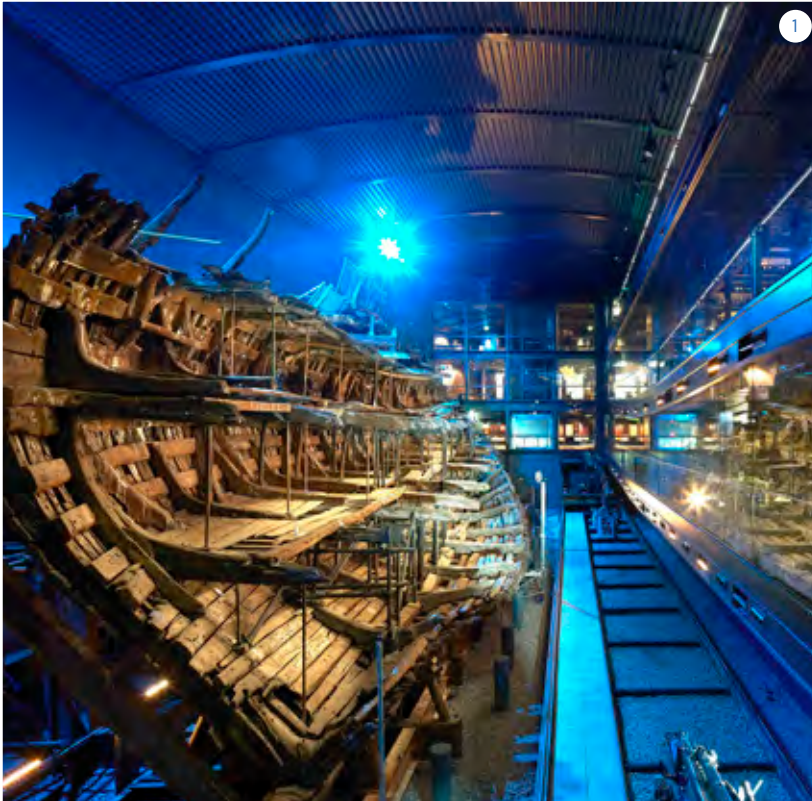
Gunwharf Quays' relaxed approach to shopping makes it the perfect outdoor destination, with over 90 famous brands and a seafront location where you'll find plenty of fresh sea air. Also, with over 30 restaurants, bars and cafés, you'll be spoiled for choice. You can have a deliciously fresh seafood lunch in Loch Fyne, enjoy French cuisine in Brasserie Blanc, share a platter in Nando's, indulge in a traditional afternoon tea at Patisserie Valerie or watch the boats go by in one of the many waterfront bars.

You can also visit the 14-screen multiplex Vue cinema, 26-lane Hollywood Bowl, Grosvenor casino and Aspex contemporary art gallery. Why not book a blast out on the Solent with Onboard Charter, or take a more leisurely tour around the harbour with full commentary from Portsmouth Boat Trips. All these depart from Gunwharf's own marina. Children can follow the history trail around the centre, matching landmarks with stickers and, when Covid measures allow, they will be able to visit Horatio's Hideaway, the children's play area.

Measures have been put in place to keep everyone safe, therefore, at peak times you may have to queue due to the centre's limited capacity, so it's recommended you check the quietest times for a more enjoyable experience.

gunwharf-quays.com





Portsmouth Historic Dockyard

Immerse yourself amongst the national maritime treasures at Portsmouth Historic Dockyard. The home to a multitude of ships, museums and attractions including the Mary Rose, HMS Victory, HMS Warrior and the National Museum of the Royal Navy, and also encompassing the Royal Navy Submarine Museum and Explosion, Museum Of Naval Firepower.

With the health and wellbeing of all visitors at the forefront of a visit, precautions have been put in place across all the sites that keep visitors safe, but do not intrude on the enjoyment.

The new Ultimate Explorer ticket gives access to all the Dockyard attractions, for a whole year, meaning that visitors can return again and again, and that includes entry to the Mary Rose Museum, which is now included in the ticket price.



Be one of the first to discover the new immersive Mary Rose Museum: When Their World Ended experience, open from Spring 2021. Meet Henry VIII who will welcome you to the home of his favourite warship and entice you to experience that fateful day in 1545 when the Mary Rose sank in the Solent, before you go on to learn about the fascinating lives of the Tudor ship's crew.

There is the new interactive exhibit: Diving Deep, which showcases the intriguing story of HMS Invincible, from her capture and inclusion in the Royal Navy fleet to her sinking, rediscovery and excavation. The discovery and excavation of HMS Invincible is considered one of the most important maritime archaeological projects of recent times certainly since the raising of the Mary Rose in 1982.

Experience the new: HMS Victory Under Hull Walkway, where you descend into the

base of the dry dock and view the 3600 tonne ship from below. Descending into the dock you have the imposing sight of HMS Victory's Bow, or Beakhead and her original elm keel held fast by copper fishplates and bolts. This is a first for HMS Victory and a must-do experience on your visit.

Remember, you can also get the very best vantage point to spot the country's largest aircraft carriers, HMS Queen Elizabeth, and HMS Prince of Wales, when they are in port. If you take a Harbour Tour at this time, you can see them from the water and almost imagine that you are really on-board.

Whatever the weather, rain or shine, there is always something interesting for all the family to discover at Portsmouth Historic Dockyard.

Find out more at and book tickets online at [historicdockyard.co.uk](https://www.historicdockyard.co.uk)



1. **The Mary Rose**
© Hufton + Crow
www.huftonandcrow.com
2. **HMS Warrior**
3. **Actor portraying Captain Hardy aboard HMS Victory**
4. **HMS Warrior**
5. **HMS Victory**

The D-Day Story

The D-Day Story has an exciting new addition, to better put visitors in the shoes of those who took part in the Normandy Landings. LCT 7074 is the last surviving Landing Craft Tank that took part in the D-Day Landings and is large enough to have carried up to 10 tanks and their crew members at a time.

The vessel arrived off Gold Beach in Normandy late on D-Day, and put its tanks ashore the following morning. It then spent months carrying more tanks, men and supplies across the Channel to help liberate Europe.

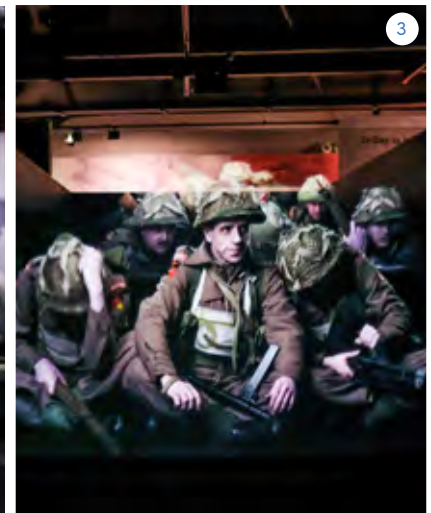
LCT 7074's post-war career was colourful, to say the least. It spent time as a nightclub, before sinking in Birkenhead Dock. Then, the National Museum of the Royal Navy stepped in to rescue the landing craft, with financial backing from the National Heritage Memorial Fund for its rescue and the National Lottery Heritage Fund for its restoration.

This restoration work wasn't the only challenge, as LCT 7074 also had to make its way by sea to Southsea, to take its place outside The D-Day Story. The complex manoeuvre was completed in August 2020, and the landing craft now stands on Clarence Esplanade under a specially designed canopy.

Today, The D-Day Story experience takes place in four parts – starting with a visit on board LCT 7074, which is now home to the museum's Sherman Grizzly and Churchill Crocodile tanks.

Visitors can learn about the landing craft's history and the tanks it carried, thanks to interactive touch-screens, video and sound. On the upper deck be taken back in time, moving through the wheelhouse, officers' quarters and galley, then it's up to the bridge and gun deck for stunning views.

Your visit continues inside the museum with 'Preparations', as you find out about the planning of D-Day and how those in charge made the crucial decisions around when and where to cross the channel.



Next is 'D-Day Landings and the Battle of Normandy'. Here, compelling audio-visual displays show how the day unfolded on each of the beaches and provide an insight into the thoughts of those on board the landing craft during their epic journey.

Your visit culminates with the spectacular Overlord Embroidery and Legacy Gallery. The impressive 83-metre long embroidery, longer than the Bayeux Tapestry, was created to commemorate people who took part in D-Day. Hear the Veterans' personal stories, giving their reflections on their wartime service.

Entry to LCT 7074 is included in admission to the museum, which is open 10am-5pm, seven days a week. For updates and to purchase tickets go to theddastory.com



1. LCT 7074 arriving at its new home in Portsmouth
2. The D-Day Story
3. D-Day Landings and the Battle of Normandy audio-visual display at The D-Day Story

LCT 7074 is a joint project between the National Museum of the Royal Navy and The D-Day Story, with funding from the National Lottery Heritage Fund.



THE D-DAY STORY
PORTSMOUTH





SPECTACULAR VIEWS, UNFORGETTABLE EXPERIENCES

**BOOK ONLINE
SAVE NOW**

Situated in Gunwharf Quays Retail Shopping Outlet
10 minutes from Portsmouth Historic Dockyard

spinnakertower.co.uk



continuum
attractions

PORTSMOUTH CITY OF MUSEUMS

**Charles Dickens'
Birthplace Museum**



charlesdickensbirthplace.co.uk

**Portsmouth Museum
and Art Gallery**



portsmouthmuseum.co.uk

**Cumberland House
Natural History Museum**



portsmouthnaturalhistory.co.uk

Southsea Castle



southseacastle.co.uk

Visit us soon and you will be amazed and inspired
by what you see. Please check the websites before
you visit for up to date opening times and details.



Portsmouth
the great waterfront city

Beside the seaside



Take in the sea air

Let nature work its magic with an energising visit to Southsea Seafront. The beach stretches four miles from Old Portsmouth, with the safer bathing areas from the Pyramids Centre to Eastney. Revitalise yourself with a sea swim or have fun with the family paddling in the clear waters.

Take a stroll along the seafront promenade and treat yourself to an ice cream or a hot chocolate – depending on the season. Take in the ever changing seascape of ferries, warships, yachts, cruise liners and more – including, if you are lucky, one of the new Queen Elizabeth Class aircraft carriers. Southsea Common, adjacent to the beach, is a vast green open space ideal for kite flying, picnics and informal ball games.



2

Henry VIII's Southsea Castle

Southsea Castle was part of a series of fortifications built in 1544 by King Henry VIII to protect the country from invaders and from where he watched his favourite warship, the Mary Rose, tragically capsize and sink in 1545.

The castle keep explains the fortification's history while the ramparts offer amazing views across the Solent and the city. Enjoy a spot of lunch or a relaxing dinner at the castle's Courtyard Café, treat yourself at the castle shop or visit the on-site Micro Brewery.

www.southseacastle.co.uk



1

The piers

A trip to the seaside wouldn't be complete without a visit to a pier and Southsea has two! South Parade Pier is ideal for a stroll – offering spectacular views out across the Solent, plus restaurants, shops, pop-up eateries, fun activities and an arcade. The Gaiety Bar also hosts functions and events throughout the year.

www.southparadepier.net

Clarence Pier is one of the largest amusement parks on the south coast and boasts a range of amusements, rides and activities for all the family.

www.clarencepier.co.uk



3



4



Blue Reef Aquarium

Explore the underwater world at Blue Reef Aquarium Portsmouth – there's a whole host of creatures to be discovered!

From sharks to clownfish, jellyfish to otters, there's plenty to see. Take in the colourful and exotic inhabitants of the coral reef in the spectacular underwater tunnel and come face to face with the wonders of the aquatic world.

Explore the planet's rainforests as you encounter some of the most amazing amphibians – from Red-bellied piranha to curious iguanas.

www.blureefaquarium.co.uk

Canoe Lake

This fun, family spot is popular for crabbing, pedalos and picnics. With a model village, rose garden, tennis courts, choice of cafés and play-park complete with water splash, it's a must on sunny days.

Cumberland House, Portsmouth Natural History Museum

Just by Canoe Lake is Cumberland House Natural History Museum which includes a seasonal butterfly house (May to September).

Meet the resident iguanodon, find out about Portsmouth's local wildlife including the observational beehive and explore the variety in the natural world in the A-Z of Natural History display.

www.portsmouthnaturalhistory.co.uk



5



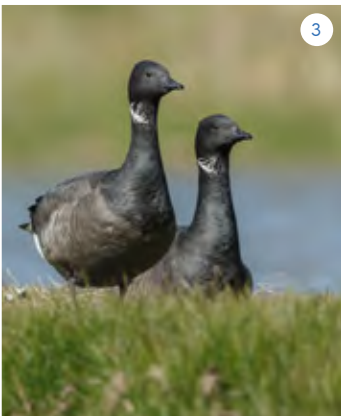
1. Southsea beach and South Parade Pier
2. Southsea Castle
3. Clarence Pier
4. Deep Blue, South Parade Pier
5. Cumberland House, Portsmouth Natural History Museum

The great outdoors

A city break needn't be just about indoor attractions – there's plenty to enjoy across Portsmouth in the great outdoors.

Start your adventure with a stroll along Southsea Seafront, with its promenade offering an uninterrupted four mile walk from Old Portsmouth to Eastney. Along the way you can enjoy views out across the Solent, as well as inland to Southsea Common, the Rose Gardens, beach huts and Southsea Castle. A favourite with locals and visitors alike, the walk is ideal for a leisurely stroll, PB-setting run or picturesque cycle ride.

If you'd prefer to get off the beaten track, head to the most northerly edge of Portsea Island, where you'll find Hilsea Lines and Foxes Forest. These offer scenic walks under the tree canopy or on the raised pathway overlooking Portsbridge Creek. A favourite spot for dog walkers, this is a must-visit for anyone heading to Portsmouth with their four-legged friends.



Hilsea Lines is also just a short hop from Farlington Marshes, an area of national scientific interest. Migratory birds flock to this area, among them are brent geese, widgeons, teals, avocets, redshanks and dunlins. Visitors heading to the city in winter months may well get the best views, when the birds take up residence in the 123-hectare nature reserve.

You can also go wildlife spotting in the shallow waters around Milton – an especially fun day out for young children. At the coastal oasis of Milton Locks you'll be able to spot wading birds, as well as plenty of creepy crawlies in the rock pools and grassland. Butterflies, grasshoppers and crickets abound, whilst the clear waters also allow you to spot tiny fish enjoying the shallows.

If you've got everything you need to make your own fun, some of the city's parks, gardens and common grounds should provide the ideal open space. Whether it's for picnics in the sun, ball games with friends or even a BBQ in the great outdoors, there's something to suit all requirements.



Southsea Common is among the largest and most popular of areas, thanks in no small part to its location right on the seafront. After a stroll along the beach you simply have to cross the road and you're in acres of open grassland with much to enjoy. It's where visitors head in their droves for summer sunbathing, some games with the kids or just for a welcoming place to meet friends and relatives.

There's more open space to enjoy in Milton Common, a semi-wild expanse of open grassland and hidden pathways. There are miles of tracks and trails that wind around small lakes and copses – offering plenty of wildlife spotting opportunities. And, of course, this being the nation's only island city, you're also a literal stone's throw from the water's edge.

Right in the city centre is Portsmouth's oldest public park, and one of its most well-loved. Victoria Park has been frequented by visitors and locals alike for generations – who enjoy the open space situated right alongside the main Commercial Road shopping area and Portsmouth and Southsea Railway Station. Inside you'll find play parks for the children, numerous

memorial statues, and even an aviary. With areas to spread out or benches to take a quick break, it's little wonder this city centre oasis has proven to be so enduring.

Of course, you can't mention the great outdoors in Portsmouth without covering the beaches. It's high on the itinerary for many visitors, who want to relax in warm summer weather, or blow out the winter cobwebs with a bracing walk. Whatever time of year you come to visit, Southsea Beach is an absolute must.

The Victorians famously believed the sea air to be a powerful restorative – and more modern research shows they could well be right. So it should come as no surprise that Southsea Beach always polls highly on the list of things that visitors to Portsmouth say they simply have to do.

It's not just the sea air to take in, of course. From the beaches you can gaze out across the Solent to our ever-changing seascape, as ships of all shapes and sizes journey through one of the country's busiest channels. From huge containers ships to tiny yachts, hovercraft to paddleboards, no two views out to sea are ever the same.



1. The Millennium Walk towards the Round Tower
 2. Hilsea Lines
 3. Brent Geese, found at Farlington Marshes
 4. Southsea Rose Garden, Canoe Lake
 5. South Parade Pier
- © Dave T by the Sea
www.davetbythesea.co.uk

Shopping by the sea

Portsmouth is perfect for a spot of retail therapy – from designer bargains to high street favourites, plus an array of independent, vintage and antique choices.



Southsea shopping

Southsea is home to distinctive stores plus regular street markets including a monthly Hampshire Farmers' Market and regular Love Southsea markets.

Palmerston Road and Marmion Road offer high street favourites along with chocolatiers, designer jewellery, boutiques and furniture – as well as a host of cafés and coffee shops.

Albert Road and Castle Road are considered two of the city's hidden gems, packed with independent shops selling fashion, furniture, antiques and collectables.

Set sail for Port Solent

With a selection of boutique and branded stores, Port Solent marina is a truly unique shopping experience. Treat yourself to something special or find the perfect gift for any occasion.

Gunwharf Quays, Waterfront Outlet Shopping

Gunwharf Quays is the UK's only waterfront shopping outlet where you'll find over 90 famous brands, many international, with savings of up to 60% off the original price. As well as men's and women's fashion, there's children's wear, shoes and accessories, sportswear, homewares, lifestyle, gifting and beauty, in short, a shopper's paradise.

All the big names are here including Hugo Boss, Nike, Kate Spade, Reiss, Ted Baker, Paul Smith, Coach, and The White Company. And when you've shopped till you drop, you'll find an array of cafés, bars and restaurants to tempt you.

Hit the high street

Head to our city centre where there are over 150 stores and the indoor shopping mall Cascades, which is home to some of the biggest brand names in the UK. A traditional street market takes place from Thursday to Saturday, selling fresh produce, flowers and clothing.



1. Lucky Pebble Pendant, Barbara Tipple Jewellers, Marmion Road, Southsea barbaratipple.co.uk
2. Strong Island Clothing Co. Marmion Road, Southsea strongislandclothingco.com
3. Gunwharf Quays
4. Cascades Shopping Centre



GW
Q

GIVE YOURSELF A DIFFERENT DAY

Shop, eat and relax on Portsmouth's historic waterfront,
with great savings at over 90 outlet stores

GUNWHARF QUAYS

WATERFRONT OUTLET SHOPPING

In the mood for food

With a wide range of restaurants, bars, cafés and pubs serving food, you are sure to find something to tickle your taste buds in Portsmouth.

Dining with a view

Both Gunwharf Quays and Port Solent are home to a wide range of eateries – many with outdoor terraces and sea views.

When it comes to dining out, Gunwharf Quays has something to suit every taste, with over 30 restaurants such as Brasserie Blanc, Loch Fyne and Wagamama. Enjoy a laid back lunch, family meal or just catch up with friends.

The Waterfront Café at Spinnaker Tower boasts a unique harbour-side location with outdoor terrace area and offers a range of hot and cold meals, including breakfast and snacks.

Port Solent is perfect for a relaxing meal with views across the marina. Choose from one of 13 bars and restaurants including the very popular O Sole Mio Italian family restaurant, Gracie-Ann's independent tea room and chains including Zizzi, Harvester and many more. Plentiful free parking is available.

Old Portsmouth and Southsea seafront are also packed with places to get a bite to eat. Wander through the cobbled streets and historic fortifications of Old Portsmouth and then enjoy a fabulous meal at one of the many traditional pubs, restaurants, bars and coffee shops.

For a taste of the sea you can't beat great fish and chips – for sea views head to Southsea Seafront and South Parade Pier for a choice of great eateries, right on the water's edge.



World food

Southsea offers a smorgasbord of global tastes across a range of bars, brasseries, restaurants, bistros and quirky cafés – from fine dining at Restaurant 27 to the unique offer at Pie and Vinyl. Food choices include English, Bangladeshi, Belgian, Chinese, French, Greek, Indian, Italian, Japanese, Korean, Lebanese, Mexican, Spanish, Thai, Turkish and Vietnamese cuisine!

Something completely different...

For a truly unique experience treat yourself to really high tea in the Spinnaker Tower, join one of the Tower's Sky Dining events, test your retro skills at Game Over or head out to sea for a truly amazing meal on No Man's Fort in the Solent.



1. The Spice Island Inn, Old Portsmouth
2. Brasserie Blanc, Gunwharf Quays
3. Restaurant 27





Emirates
**SPINNAKER
TOWER**

**DELICIOUS FOOD,
STUNNING
VIEWS**

WATERFRONT CAFÉ

Open daily, serving breakfast, lunch and hot & cold drinks and snacks.

Situated on the ground floor of Emirates Spinnaker Tower, within Gunwharf Quays.

SPINNAKERTOWER.CO.UK



**ONE OF THE
LARGEST
AMUSEMENT PARKS
ON THE SOUTH COAST**

WWW.CLARENCEPIER.CO.UK

A PLACE TO STAY A PLACE TO EAT & DRINK A PLACE TO HAVE FUN

2016 2018
PORTSMOUTH
DISTILLERY CO

ALL TOURS VOTED
"EXCELLENT"
ON TRIP
ADVISOR

**JOIN A TOUR OF THE
PORTSMOUTH DISTILLERY,
SET IN THE STUNNING
FORT CUMBERLAND**

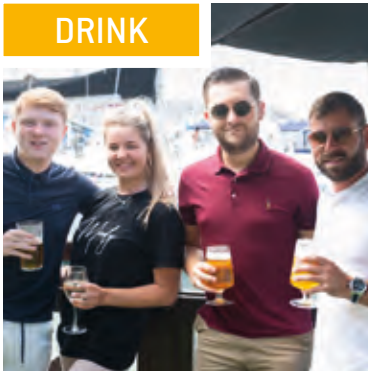
FOR MORE INFORMATION VISIT
WWW.THEPORTSMOUTHDISTILLERY.COM

SHOP OPEN DAILY 11AM - 2PM
CALL 023 9273 3339 FOR DETAILS



PORTSMOUTH'S MOST RELAXING WATERSIDE DESTINATION

DRINK



EAT



**FREE
PARKING**

UNWIND



SHOP



For more information visit: www.portsolent.com

Dining

Lifestyle

Shopping



Boardwalk.Port.Solent



ThePortSolent



theportsolent

Independent island

One thing you simply can't mistake in Portsmouth is its strong independent culture. From breweries and distilleries to cafés and restaurants (and even the football club), there's a strong culture of supporting local. This also greatly benefits our visitors, as it means you can enjoy a short break with a difference, taking in places and experiences you will not find anywhere else. So if you want to explore Portsmouth's independent side, look no further.

Brewing and distilling

Enjoy a break from the norm with some different drinks – all brewed right here in Portsmouth. Staggeringly Good specialises in modern IPAs, whilst Urban Island has a great selection of beers to drink in or take away at its Hilssea tap room. Or why not try a beer brewed within a castle, courtesy of Southsea Brewing Company?

If you have a taste for something stronger, head to the Portsmouth Distillery Co. Though originally specialising in rum, the distillery has since spread out to make gin – and even collided the two worlds with its unique 'Forum', a rum that's distilled with botanicals.



Cafés and coffee shops

Some of the easiest ways to explore Portsmouth's indie culture is to enjoy its café and coffee culture. You can get your caffeine fix at some great venues right across the city, with their own special blends and creations for you to try. Canvas provides some of the best coffee around, the Tenth Hole is famed for its decadent cakes, and Hideout Coffee Company has speciality doughnuts available fresh each day. If you can't decide what to try, a visit to Outside In will definitely fit the bill. The food court serves a huge variety of quality street eats from around the world, cooked in front of your eyes.



Loaves and fishes

If you can't imagine anything more enjoyable than tucking into some quality, freshly baked bread then Portsmouth's independent bakeries have you covered. Bread Addiction and Sourdough Bakehouse in Elm Grove are popular choices, with speciality sourdoughs available to take away. Meanwhile, Andre's in Southsea and Portsmouth city centre offer quality lunch options on the go, for those who want more than a supermarket meal deal.

Seafood lovers are well catered for – as you'd surely expect in the UK's only island city. Viviers Fish Market has been a city staple for decades, offering the freshest catch straight off the boat. The stock changes every day depending on what has been brought back, so head down to Old Portsmouth and see what you can get whilst it's still super fresh.

Getting crafty

If you'd prefer getting stuck in yourself, Portsmouth's craft scene has much to offer. The Hotwalls Studios are at the forefront, with a host of local designer-makers offering their products to browse and buy, as well as some exciting hands-on courses to let you try the techniques out for yourself.

There are similar activities to enjoy at Southsea Bathing Hut, with workshops on making your own skincare products, whilst the city's cafés offer bread making or cake decorating masterclasses.



1. **Fried chicken donut from Hideout Coffee**
2. **Outside In**
©Will Hutchinson
@Willhutchfilms
3. **The Tenth Hole**
©Emma Trinder
4. **Camber Dock, Old Portsmouth**
5. **Textile Artist Alice Hume Studio 9, Hotwalls Studios**
www.vanderhume.co.uk
© Sophie Twining
www.sophietwining.com

PORT SOLENT inset

Queen Alexandra Hospital A&E
Playzone
Cosham Station
Hilsea Lines
The Mountbatten Centre
Hilsea Station
Andrew Simpson Watersports Centre

PORTSMOUTH HARBOUR

continued on main map

International Port
Charles Dickens Birthplace Museum
Victory Retail Park
Cascades Shopping Centre
Portsmouth & Southsea Station
City Centre to The Hard
Guildhall
New Theatre Royal
Highbury College
Law Courts
Charter Community Sports Centre
The Bridge Shopping Centre
Fratton Station
Kings Theatre
The Wedgwood Rooms
Wimbledon Park Sports Centre
Southsea Skate Park
Southsea Castle
Pyramids Centre
South Parade Pier

Naval Base
Mary Rose Museum
HMS Victory
National Museum of the Royal Navy
Action Stations
HMS Warrior 1860
Portsmouth Harbour Station
Gunwharf Quays
Spinneraker Tower
Millennium Promenade
Round Tower
Hotwells Studios
Square Tower
Royal Garrison Church
Portsmouth Anglican Cathedral
Spur Redoubt
Pirate Pete's
Clarence Pier
Southsea Common
Blue Reef Aquarium
D-Day Story
Southsea Castle
Pyramids Centre
South Parade Pier

North

Distance in miles
0 1/4 mile
Walking Time in minutes
5 minutes



Key to Quarters

- Central Southsea
- City Centre
- Historic Waterfront
- Port Solent
- Seafront
- University

Key to Buildings

- Hospital
- Shopping
- Sport and Leisure
- University
- Other building
- Parks and open spaces

Key to Attractions

- Aquarium
- Art Gallery
- Caravan Site
- Castle
- Cathedral
- Church
- Cinema
- Football ground
- Historic Dockyard
- Industrial heritage
- Museum
- Pier
- Shopping
- Sports Centre
- Swimming Pool
- Theatre
- Tower or Folly
- Walking Route
- Information Centre

Key to other symbols

- Buses
- Car Park
- Coach Park
- Indoor Play Area
- Millennium Promenades
- Play Area
- Police Station
- Post Office
- Viewpoint
- Park & Ride stop

For Ferries follow symbols

Isle of Wight

- Car
- Passenger
- Hovercraft
- Gospport Passenger

P Parking Information
The car parks listed below are identified on the map by letters and symbols

Controlled Off-street parking

Name	no. of spaces		
A. All Saints (D2)	42	P. Port Solent (inset A1)	996
B. Ashby Place (C6)	61	Q. Pyramids (D7)	148
C. Broad Street (A5)	29	R. Seafront, Esplanade (B6)	373
D. INEOS (A5) (restricted)	57	S. Historic Ships (B3)	295
F. Southsea Common (C6)	68	NCP car parks are located at:	
G. Clarence Pier (B6) (closed)	154	T. Cascades, Charlotte Street (C3)	
H. Clarence Street (C2)	125	U. Station Street (C3)	
I. Seafront, D-Day (C7)	125	V. Crasswell Street (D3) multi-storey	
J. Guildhall Walk (C4)	58	W. Crasswell Street (D3) surface	
L. Gunwharf Quays (B4)	1400	Coach Drop-Off point	
M. The Harbour (B4)	62	Coach parking is available at:	
N. City Centre South, Isambard Brunel (C4)	485	D-Day Museum (C7)	25
O. Seafront, Canoe Lake (F7)	146	Museum Road (C5)	11
		Port Solent (inset)	8
		St. George's Road (B4)	5

Based on aerial photography and field survey. While every effort has been made to ensure this map is accurate and up to date, neither the publishers or the copyright holders accept any liability for loss or inconvenience incurred as a result of any errors. The representation of any footpath, road or track on this map does not necessarily indicate any right of way.

Culture by the coast

Portsmouth has an outstanding year-round events programme on land, sea and sky, including music and food festivals, international sailing and running events, outstanding theatre, comedy and drama, art and literary festivals, an international kite festival and a great winter programme too.

For literature lovers, **BookFest** offers an exciting programme of events and writing workshops, both online and at a variety of locations across Portsmouth.

www.portsmouthbookfest.co.uk

Portsmouth is the city where the great author **Charles Dickens** was born and the world famous detective **Sherlock Holmes** was created. Visit the Dickens' Birthplace Museum and Portsmouth Museum and Art

Gallery to find out more about these iconic figures from British literature.

Portsmouth Comic Con – International Festival of Comics, presented by The Guildhall Trust, is an annual event which delivers the best of comic, film, TV and pop culture entertainment in what is fast becoming one of the most-loved Comic Cons in the country! Featuring international artists and a fascinating range of panels, exhibitions, cosplay, VR, gaming, Steampunk and a Comic City full of merchandise.

In need of a laugh? **The Big Mouth Comedy Festival** will not disappoint as folly, frivolity and tomfoolery is guaranteed in a fantastic line-up of the best of the fringe, comic legends, emerging talent and comedy drama!

www.portsmouthguildhall.org.uk

Remember – contact the venue or event organiser before visiting to make sure you are fully aware of any changes to programming or local restrictions that may be in place.



In June the city's annual 10 day cultural festival, **Portsmouth Festivities**, takes place. Showcasing the art, culture and heritage of Portsmouth, the festival includes music, theatre, dance, art, literature, talks, film, outdoor events and family activities.

Victorious Festival – the UK's biggest metropolitan music festival – takes place on Southsea Seafront during the August bank holiday weekend.

Victorious is the biggest festival weekend in the South with a carefully curated line-up that always includes the perfect combination of heavyweight headliners, family favourites, and up and coming talent ensuring there is something for everyone.

Showcasing Southsea, Victorious' stunning seafront setting with a metropolitan backdrop creates the ultimate family-friendly festival experience.

Alongside the scenery, experience an enormous free Kids Arena (Saturday and Sunday only), 13 stages packed with entertainment, bustling markets, and an amazing atmosphere.

With early bird tickets on sale, Victorious Festival continues to be one of the best value festivals in the UK.

For more info and to purchase tickets please visit www.victoriousfestival.co.uk

Winter at the waterfront

Visit one of the city's Christmas markets and fairs and then enjoy ice skating in front of the impressive Portsmouth Guildhall – on real ice. For some traditional entertainment treat yourself to a pantomime, Christmas carols or Christmas show at one of the city's venues.



Victorious Festival 2019
© Tom Langford
www.tomlangfordphoto.co.uk



More entertainment!

Portsmouth is home to two wonderful theatres offering a range of dramatic live entertainment. The dignified and beautiful Kings Theatre, with its Italian Renaissance style of decor, is one of the most complete Matcham theatres in the country. It plays host to touring West End productions and a varied programme of opera, ballet, comedy, drama and music.

The New Theatre Royal in the heart of the city has enjoyed a long and fascinating history since first opening in 1856, and along with the Kings, is one of the few working Matcham theatres in the country. It is home to cutting edge dance, theatre, drama, music, comedy and children's performances and events.

Both theatres also offer special behind the scenes tours.

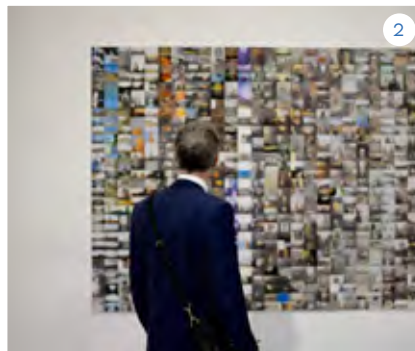
In the heart of the city, the majestic Portsmouth Guildhall is yours to explore. Completed as the Town Hall in 1890, the iconic building was rebuilt following extensive damage sustained in The Blitz of WWII. Reopened as a Concert Hall by HM The Queen in 1959, the venue has staged some of the greatest performers of all time including The Beatles, The Rolling Stones, U2, Sir Elton John and many more.

By day, Portsmouth Guildhall offers a changing programme of events, exhibitions and tours and as evening falls some of the world's finest music, comedy, classical, dance, drama and family shows can all be enjoyed.

Groundlings Theatre is an exciting arts venue in Portsmouth based in the stunning Beneficial School. This small venue offers a varied programme of events for young and old, from pantos to comedy, new plays to Shakespeare.

Other live venues in the city include the Wedgewood Rooms and South Parade Pier's Gaiety Bar, offering great music, comedy and more throughout the year. Many pubs also host live gigs and the city's clubs are great if you want to dance the night away.

Portsmouth also has a great film offer with two multiplex cinemas – at Gunwharf Quays and Port Solent – and great independent films at No. 6 Cinema and Southsea Film Society.



1. **The Kings Theatre**
2. **Aspex Gallery**
© Daniel Boss
3. **Hotwalls Studios**
© Sophie Twining
www.sophietwining.com



Picture this

Aspex Gallery in Gunwharf Quays presents an exciting and varied programme of exhibitions, off-site projects and participation events. Aspex is a great place to see both contemporary artists from around the world and local Portsmouth artistic talent. Soak up the atmosphere in this former naval storehouse and make time for a coffee or bite to eat in the café.

Portsmouth Museum and Art Gallery is home to fine and decorative art galleries with changing displays. Spend time visiting the rest of this free museum and enjoy tea and cake in the beautiful gardens.

Take time to check out the Hotwalls Studios creative quarter in Old Portsmouth, where the city's historic fortifications have been transformed into thirteen working studios and a waterfront dining space. Other galleries in the city include the Jack House Gallery, the Coastguard Studio and Art Space, Portsmouth.

**KINGS
THEATRE**



**Kings Theatre
Albert Road, Southsea
Hampshire PO5 2QJ**

**Check the website to book for
all our latest events!**

www.kingsportsmouth.co.uk

A vibrant past

From early beginnings in 1180, Portsmouth has a fascinating history just waiting for you to discover during your visit, below are just some of the historical highlights.

Old Portsmouth

Stroll through Old Portsmouth in the footsteps of Vice Admiral Lord Nelson – it is from here that he set off for the Battle of Trafalgar – and view the statue erected in his honour. Explore the historic fortifications at the entrance to Portsmouth Harbour including the Round Tower and the Square Tower – built in 1494 as part fortifications and as a home to the Governor of Portsmouth. The tower was converted to a gunpowder store in 1584 and restored to its present condition between 1979 and 1986.

View the Australian Settlers Memorial, recalling the sailing of the First Fleet of settlers from Spithead to Botany Bay, Australia, on 13 May 1787 and visit the creative quarter Hotwalls Studios, where the city's historic fortifications have been transformed into thirteen working studios and a waterfront dining space.

Portsmouth's Anglican Cathedral (St Thomas's) is located on the High Street; discover its fascinating history including the D-Day window and the grave of the unknown sailor from the Mary Rose. The Cathedral also hosts a range of events throughout the year including art installations and craft markets.

Nearby is the Garrison Church which has stood in Portsmouth for nearly 800 years serving as a medieval hospital and hostel for pilgrims, a Tudor ammunition store and church for the forces since the 1580's. Fine 20th-century stained-glass windows depict scenes from the Second World War and from the church's own history.

Portsmouth is a city with not one, but two cathedrals. St John's Catholic Cathedral, in the city centre, dates from 1882. Outside the Cathedral's west end stands the prominent sculpture of St John the Evangelist.



1. Garrison Church
2. Portsmouth Museum and Art Gallery
3. Portchester Castle
4. Fort Nelson

1



2



3

Portsmouth Museum & Art Gallery

With free admission, Portsmouth Museum and Art Gallery is a popular attraction for the whole family and a great place to begin your discovery into Portsmouth's diverse and interesting history. Find out how life in the city has changed from the 17th century to the present day.

Industrial heritage at Eastney

The Beam Engine and Gas Engine houses at Eastney include a pair of classic Boulton Watt beam engines and pumps restored to their original 1887 condition. Check online for details of open days.

The forts

Discover the national collection of artillery at Fort Nelson, strategically positioned with panoramic views atop Portsdown Hill. Explore 19 acres of ramparts, outer fortifications, secret underground tunnels, and ammunition bunkers at this fully restored Victorian fort.

Pre-book a fully guided heritage tour of either Fort Widley (including the underground Civil Defence Bunker) or of Fort Purbrook and understand the unique place in military history both forts played.

Portchester Castle provides the perfect setting for a relaxed, fun, historic day out. The most impressive and best-preserved of the Roman 'Saxon Shore' forts, Portchester Castle was originally built in the late 3rd century.

Portsmouth tourist guides

Join one of the historical walks and dive into the city's history. For more info go to visitportsmouth.co.uk

4





Sportsmouth

Portsmouth is a city with a proud sporting heritage, world-class facilities and a calendar of international events – be it road running at the Great South Run, sailing events in the Solent or home matches at Portsmouth Football Club.



1. The Andrew Simpson Watersports Centre
2. The Great South Run
3. Mountbatten Centre

Out on the water

As the UK's only island city, Portsmouth is a prime destination for water sports of all kinds and boasts three marinas; Gunwharf Quays, Port Solent and Southsea Marina.

The Andrew Simpson Watersports Centre is the first port of call for any enthusiast, with courses and access to water-based activities including sailing, rowing, power-boating, kayaking, canoeing and paddle-boarding. The centre also houses a 13-metre outdoor climbing tower; one for the brave!

Or try out wakeboarding at the South Coast Wakepark, equipped with a premier cable wake system and offering a wide range of equipment and hire gear suitable for all abilities, from beginners to experienced wakeboarders.

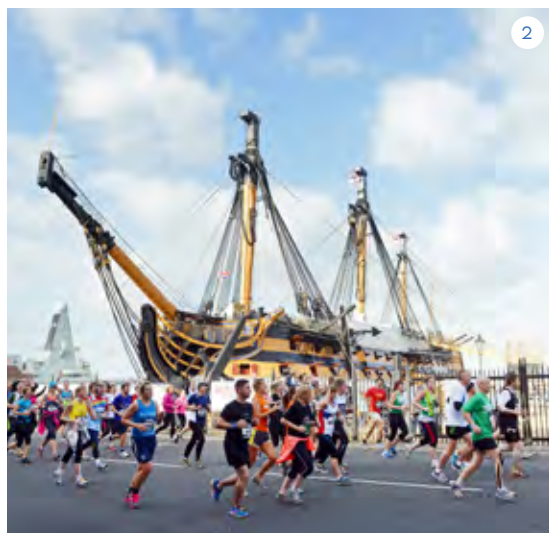
Cycle the city

Get in the saddle to explore Portsmouth by bike and you certainly won't be disappointed. With miles of dedicated cycle paths, Portsmouth is an amazing city to traverse on two wheels.

We also host a growing number of cycling events; check out the [visitportsmouth.co.uk](https://www.visitportsmouth.co.uk) website to find out more about these and all city events.

Great golf

Portsmouth boasts two 18-hole golf courses – Portsmouth Golf Centre and Portsmouth Golf Course. Both are available for pay and play, offering outstanding views and affordable sessions on great courses.



Runners' paradise

The Great South Run is a major highlight of the Portsmouth sporting calendar and is recognised as the world's leading 10 mile running event. This fast, flat course is ideal for setting PBs, whilst also taking in some of the city's best scenery – from the beautiful seafront to Nelson's iconic HMS Victory. For one weekend, the roads of Southsea and Portsmouth are opened to athletes of all ages and abilities taking part in one of the scheduled races over two days in October.

Whether you prefer to run the streets, the seafront or the track, Portsmouth has an ideal route for you. With miles of beautiful seafront promenade, Southsea is a runner's paradise, where you can train with a sea-breeze on your back and beautiful views across the Solent towards the Isle of Wight and Hayling Island.

Skate away

The promenade along Southsea seafront is ideal for in-line and roller skating, whatever your age. It's also worth zipping down to Southsea Skatepark on the seafront, which is home to international-standard ramps. In winter enjoy skating on real ice in front of Portsmouth Guildhall.

Outdoor family fun

When the weather's good you can't beat Southsea's seafront. It offers miles of pebble beaches to explore and gigantic green spaces where you can let off some steam and enjoy the sea air.

There are also tennis courts, adventure mini golf, a pitch 'n' putt green, play parks and beach volleyball courts to keep you entertained. On warm days the beaches in Southsea are perfect for a swim or a paddle

Sport centres

Portsmouth's Mountbatten Centre is home to an Olympic-sized pool, teaching pool, 150 station state-of-the-art gym, health suite, eight-court sports hall, squash courts, athletics and cycle tracks, and a great programme of activities and events. Next door is Portsmouth Tennis Centre with four indoor and six outdoor courts.

Pyramids on Southsea seafront is being transformed into one of the largest Play and Bounce indoor attractions, with colourful, interactive experiences for children up to 11 years old. Further improvements include a 10-zone health and fitness offer for all and four studio spaces. The popular pre-book gym and classes currently in place will remain open during the transformation, with the planned opening for the full offer taking place in late spring 2021.

Canoe Lake Leisure tennis boasts a pavilion and four top-specification artificial grass courts along with newly refurbished grass and hard courts.

The Peter Ashley Activity Centres are located in the historic environments of Fort Purbrook and Fort Widley on Portsdown Hill. Activities to pre-book include horse riding, archery, bush craft, mountain biking, climbing wall, orienteering, rifle shooting and laser tag. Book a family adventure day and learn a new skill.



YOUR LINK TO

an island escape

Escape to the Isle of Wight - it's just
22 minutes away by FastCat from
Portsmouth Harbour train station.

Book your trip now at wightlink.co.uk



YOUR LINK TO THE ISLAND

TAKE FLIGHT BY HOVERCRAFT

SOUTHSEA, PORTSMOUTH TO RYDE, ISLE OF WIGHT



Visit the Isle of Wight for day trips, short breaks, attractions, dining,
outstanding scenery and beautiful sandy beaches...

Covid secure measures in place. see website for more



@hovertravelltd



/hovertravelltd



info@hovertravel.com



www.hovertravel.co.uk



CRUISE IN STYLE FROM
PORTSMOUTH INTERNATIONAL PORT

A dramatic harbour entrance makes Portsmouth a spectacular destination to begin any journey



VISIT [PORTSMOUTH-PORT.CO.UK](https://www.visitportsmouth.co.uk)

Travel information

Planning your journey

With a motorway into the heart of the city, an international port, a rail network direct to London in just over 90 minutes and international airports close by, access to Portsmouth couldn't be easier, whether you are coming from within the UK or overseas.

Isle of Wight

Travelling to and from the Isle of Wight couldn't be easier. Hovertravel operates a passenger hovercraft from Southsea to Ryde, the world's only year-round hovercraft service. Wightlink operates both a car ferry service from Portsmouth to Fishbourne and a foot passenger catamaran service from Portsmouth Harbour to Ryde Pier.

Driving

Portsmouth enjoys good road connections; the A3(M) puts London just over an hour away and the M275 connects Portsmouth with the M27 and the rest of Britain's motorway network.

Portsmouth's Park & Ride is accessed direct from the M275 as you drive into the city and offers visitors a quick, easy and affordable way to visit. You are advised to check if the Park & Ride service is operating when you plan to visit www.parkandride.portsmouth.gov.uk

Rail

Travelling to Portsmouth by train is a great option with regular direct services to London (from 92 mins), the south coast and the rest of the UK. Book in advance and take advantage of regular special offers.

Air

Portsmouth is easily accessible by air. Southampton International Airport (www.southamptonairport.com) is just 22 miles away and the major London airports Gatwick and Heathrow are both 60 miles away with easy rail access to the city.



Useful sources of travel information to help you plan your journey:

Visitor Information Service at the Hard Transport Hub

www.visitportsmouth.co.uk

✉ vis@portsmouthcc.gov.uk

☎ 023 9282 6722

My Journey:

www.myjourneyportsmouth.com

National Express:

www.nationalexpress.com

☎ 08717 818181

MegaBus: www.megabus.com

National Rail Enquiries:

www.nationalrail.co.uk

☎ 08457 484950



1. Brittany Ferries
2. Hovertravel

2





1

Portsmouth International Port

With its dramatic harbour, Portsmouth International Port creates a spectacular arrival and departure for passengers.

It has more routes to Europe and a growing cruise offer, making it ideally located for both short breaks and international travel.

Regular ferry services sail to Caen, Cherbourg and Le Havre in Normandy, St Malo in Brittany and Spanish destinations Santander and Bilbao. There are also frequent sailings to Jersey and Guernsey.

Major operators and cruise lines have chosen Portsmouth for its superb position and impressive facilities, offering customers inspiring destinations aboard beautiful luxury liners. The port also boasts one of the most environmentally advanced terminal buildings in the UK, and sustainability is central to their future plans.

At the port you're never far the city's main attractions, which makes it ideally suited to extending your holiday, giving you the perfect opportunity to stay a while and explore.

Walking and cycling

The city is flat and compact, making walking and cycling convenient modes of transport. Park up your car or travel by public transport and explore the city on foot.

Average walking times from Portsmouth and Southsea station

Portsmouth Guildhall	⌚ 4 mins
New Theatre Royal	⌚ 5 mins
City Centre shopping	⌚ 6 mins
Kings Theatre	⌚ 23 mins
Palmerston Road shopping	⌚ 25 mins
D-Day Story and Southsea Castle	⌚ 32 mins
Pyramids	⌚ 33 mins

Average walking times from Portsmouth Harbour train station

Gunwharf Quays	⌚ 4 mins
Portsmouth Historic Dockyard	⌚ 6 mins
Spinnaker Tower	⌚ 8 mins
Portsmouth Museum and Art Gallery	⌚ 14 mins
Old Portsmouth	⌚ 15 mins
Clarence Pier and Esplanade	⌚ 24 mins
D-Day Story and Southsea Castle	⌚ 36 mins

Visit Portsmouth

Escape to the Waterfront by Train

From the proud, historic warships to the ultra-modern eateries at the top of the harbour's Spinnaker Tower, Portsmouth is home to the past and future of waterfront wonders.

BOOK IN ADVANCE FOR BIG SAVINGS

South Western Railway





1



2



3

More to explore

Submarines and more at Gosport

A short ferry ride across Portsmouth Harbour is Gosport. Discover what lurks beneath the waves at the Royal Navy Submarine Museum and learn all about the weapons used by the Royal Navy at Explosion! – Museum of Naval Firepower.

Visit the Museum of Diving and view the array of curious diving equipment, some used by James Bond, then visit the nearby Hovercraft Museum, home to the largest collection of hovercraft in the world, including the one that Bond escaped on in the film “Die Another Day”. Don’t miss ‘Little Woodham’ 17th century living history village, step back in time and find out about the historic skills of the blacksmith, potter, lace-makers and weavers.

Set sail to the Isle of Wight

Take the short journey across to the Isle of Wight where you will find great countryside, sandy beaches and a wealth of attractions including the famous Carisbrooke Castle and Osborne House, once home to Queen Victoria.



4

Explore beautiful National Parks

Right on our doorstep you’ll find the South Downs National Park, full of fascinating trails to walk or cycle and some great adventure pursuits. The 140,000 acre New Forest National Park offers a wealth of places to visit and is a haven for cyclists, horse riders and walkers.

Capital attractions

And don’t forget London is just over 90 minutes away by train or coach. Arriving at Waterloo or Victoria you are in easy reach of the London Eye, Imperial War Museum, South Bank, Big Ben and the rest of the many amazing tourist attractions, it couldn’t be easier to take a day trip to the capital.



1. Royal Navy Submarine Museum, Gosport
2. New Forest National Park
3. Big Ben and the Houses of Parliament, London
4. Osborne House, Isle of Wight

hotwalls
STUDIOS

Karl Rudziak - www.wedontneedculture.co.uk - @PaulGonella



open studios

Every third Sunday of the month, 11am – 4pm.

An opportunity to visit our creative studios, see all our artists and makers at work and buy or commission professional pieces.

www.hotwallsstudios.com [f](#) [t](#) [i](#) [@hotwallsstudios](#)

Portsmouth
the great waterfront city

Portsmouth
CITY COUNCIL

PORTSMOUTH

GUILDHALL

COMIC CON
INTERNATIONAL FESTIVAL OF COMICS

PORTSMOUTHCOMICCON.COM

aspex

Discover aspex

Portsmouth's leading contemporary art gallery

Open Wed - Sun
11.00 - 16.00hrs
www.aspex.org.uk

Portsmouth
the great waterfront city

TO FIND OUT ABOUT ALL THINGS PORTSMOUTH, INCLUDING THE MOST UP TO DATE INFORMATION ON EVENTS, ATTRACTIONS AND PLACES TO EAT, DRINK AND STAY, GO TO VISITPORTSMOUTH.CO.UK



ESCAPE TO THE WATERFRONT
PORTSMOUTH

SPINNAKER TOWER

© Stefan & Sara Venter www.upixphotography.com

TAKE A VOYAGE OF DISCOVERY AT

PORTSMOUTH
CATHEDRAL

The Cathedral of the Sea



FREE ENTRY
£5 SUGGESTED DONATION

Open daily, just a short walk from Gunwharf Quays & the Historic Dockyard

Discover more at www.portsmouthcathedral.org.uk



VISITOR INFORMATION

Portsmouth's Visitor Information Service is here to help you make the most of your time in this vibrant city.

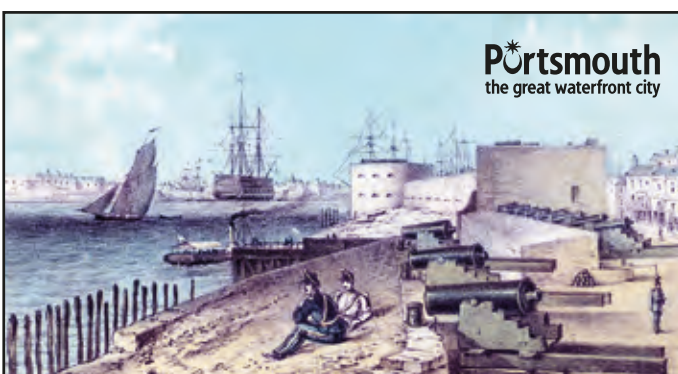
The friendly, knowledgeable team can provide advice and information on all aspects of your visit including:

- Visitor attractions
- Events and activities
- Evening entertainment
- Places to stay
- Travel to and around the city

Make sure you check out the great group rates and offers available to you if you are visiting with 10 or more people.

Book a Greeter for groups of six or less or a Tourist Guide* for larger groups (*fee charged).

For more information, contact the visitor information service call 023 9282 6722, visit www.visitportsmouth.co.uk or email vis@portsmouthcc.gov.uk



Find out more about Portsmouth's incredible history by joining one of the city's **guided walks**

Full listings available on www.visitportsmouth.co.uk



Great places to stay

Portsmouth has a wealth of accommodation – you will find everything from top quality luxury hotels to boutique chic, plus a superb choice of guest houses and bed and breakfasts. The following advertisements showcase just a selection of what is on offer.

For more details and further information go to visitportsmouth.co.uk

Booking conditions

The information contained in this guide is correct at time of going to press. Please note that proprietors reserve the right to amend prices and conditions from those in this guide and/or impose additional conditions, provided they inform you of such conditions before they accept your booking.

Holiday insurance

Don't forget to make sure you have insurance to cover any losses you may incur. Even if you are travelling within the UK, insurance costs very little and could save you a great deal.

Key to facilities

- | | |
|----------------------------------|-------------------------------|
| Facilities for hearing impaired | Electric shaver point |
| Facilities for visually impaired | Linen supplied free of charge |
| Licensed for alcohol | Linen for hire |
| Restaurant or café | Iron available |
| Breakfast | Cots available |
| Tea/coffee making facilities | Dogs welcome |
| WiFi | Conference facilities |
| Off street parking | Lift |
| Ground floor bedrooms | Credit cards accepted |
| Children welcome – minimum age | Staff speak foreign languages |
| TV in rooms | Cooker |
| Ensuite rooms available | Refrigerator provided |
| Air conditioning | Laundry |
| Hairdryer | Dishwasher |
| | Microwave |



Lakeshore Drive, Portsmouth, PO6 3FR
T: 023 9200 6245 **E:** portsmouthhub@village-hotels.com
W: www.village-hotels.com

Village Hotel Club Portsmouth has 153 super stylish hotel rooms, as clever as they are comfortable, with big TVs, handy gadgets and refreshing drench showers. Upgrade to a Club Room for even more extras, including exclusive toiletries, Nespresso coffee machine and free Gym access.

Village Gym is a huge state of the art health club with the latest Technogym cardio equipment and a choice of award-winning classes such as BodyPump, BodyCombat, BodyAttack Mind and Body, Village's HIIT class 'Burn', the ultimate calorie-burning session, and classes by Les Mills©. And if all that sounds too energetic, you can enjoy a gentle swim in our 20 metre pool, followed by a steam and sauna.

Our Pub & Grill is at the heart of Village Portsmouth, with a vibrant, inviting, friendly atmosphere. Watch live sport on giant HD screens, enjoy ice cold beers and a great choice of wines and cocktails. Tuck in to one of our famous, juicy burger stacks and dare to take on our devilishly hot wings. Or, if you prefer a delicious healthy option, try our succulent skewers or halloumi bowls.

We even have our own in-house Starbucks, so you can wake up to your favourite coffee and tasty snack!

And if you're visiting Village Portsmouth at the weekend, then you're in for an extra treat. Our hugely popular Tribute and Party nights are great fun. Sing and dance the night away to all your favourites before heading upstairs for a great night's sleep in your big comfy bed.

Village Portsmouth is conveniently located just off the M27 motorway, and just a short drive from Portsmouth's city centre.

Booking your stay at Village couldn't be easier on our easy to use website, or via our app, downloadable from the App Store or Google Play.

Price: From £29 – £139 per room per night

Rooms: 153 **En suite:** All

Facilities:



KEPELS HEAD

Map page 24
Ref B4

24–26 The Hard, Portsmouth, Hampshire, PO1 3DT
T: 023 9283 3231 **E:** supervisor@keppelshead.co.uk
W: www.keppelshead.co.uk

Built in 1779, Keppel's Head is a hotel with an interesting history and many of its amazing original features are still in place. The recent modernisation of the hotel has emphasised these features whilst retaining the hotel's charm.

The hotel sits between two neighbouring areas of different time periods. To one side you have the newly developed millennium project of Gunwharf Quays and the Spinnaker Tower, whilst on the other you have the Historic Dockyard which houses three magnificent ships and the National Museum of the Royal Navy.

The hotel has 30 en-suite rooms. The new management operates a restaurant, "Captain's Table", a bar, "The Nelson's Bar", and a function room, "The Nut Bar".

With the amazing facilities, we now serve breakfast, lunch and dinner.

We also offer a wedding banquet package, corporate function, birthday and all forms of celebrations and parties.

Car park for 17 cars, on a first come first served basis.

Price: £50 per room per night

Rooms: 30 **En suite:** All

Facilities:



LADY HAMILTON

Map page 24
Ref B4

21 The Hard, Portsmouth, Hampshire, PO1 3DT
T: 023 9287 0505 **E:** yukweelim@gmail.com
W: www.theladyhamilton.com

The Lady Hamilton Portsmouth has an interesting history, trading as "The Nags Head" public house in 1716 and later becoming a wine merchants supplying the Royal Navy. The premises then became a bookshop which was part of Gieves & Hawkes who made the uniform that Lord Nelson died in.

In 1992 the building was converted back to its former glory of a public house and now also welcomes guests to the bed and breakfast accommodation above the pub, offering stunning views across Portsmouth harbour. Its location is ideal for visitors, being a stone's throw from Gunwharf Quays, the Spinnaker Tower and Portsmouth Historic Dockyard.

The inside of the pub has a very quintessential English feel to it—a throwback to days gone by for punters.

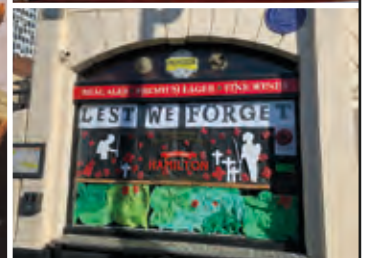
It is stocked with premium beer, ciders and 2 guest ales on the hand-pull.

You can also treat yourself to a locally renowned roast dinner—served daily. A complete selection of meats and vegetables piled onto the plate will leave you feeling very satisfied indeed.

Price: £40–£100 per room per night

Rooms: 11 **En suite:** All

Facilities:



IBIS PORTSMOUTH

Map page 24
Ref C4

Winston Churchill Avenue, Portsmouth, PO1 2LX

T: 023 9264 0000 **E:** H1461@accor.com

W: www.accorhotels.com

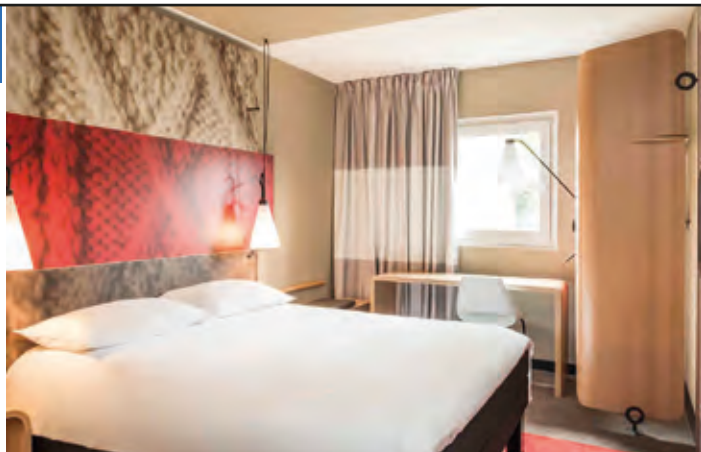
Located in the centre of the beautiful city of Portsmouth, we're the perfect base from which to enjoy events and attractions in the city and surrounding areas. Marvel at the Goodwood Festival of Speed, challenge yourself in the Great South Run or find harmony at the Victorious music festival and much more – all from the comfort and convenience that Ibis Portsmouth Centre provides.

We look forward to making you feel welcome.

Price: From £60 – £179 per room per night

Rooms: 144 **En suite:** All

Facilities:



ROYAL MARITIME CLUB & HOTEL

Map page 24
Ref B3

75 – 80 Queen Street, Portsmouth, Hampshire, PO1 3HS

T: 023 9282 4231 **E:** info@royalmaritimeclub.co.uk

W: www.royalmaritimeclub.co.uk

The Royal Maritime Club & Hotel is one of the oldest and most historic hotels in Portsmouth. The hotel is steeped in maritime history and offers 90 en-suite classic bedrooms and a whole host of leisure facilities; including Horatio's Restaurant, a newly renovated and enlarged dining space, the Victory Bar, Compass Café and a fully accessible swimming pool, sauna, spa pool, skittles alley and snooker room.

The Club & Hotel is fully licensed for weddings and has several large function rooms to suit all types of occasions and celebrations.

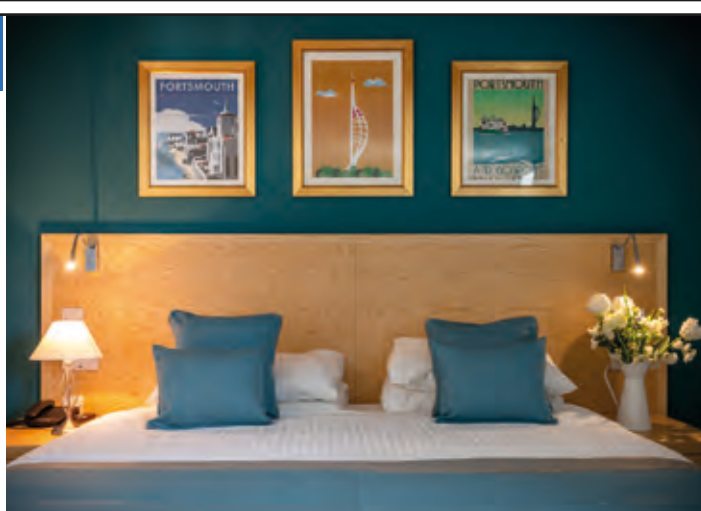
The Royal Maritime Club & Hotel is located just a five minute walk away from the Portsmouth Historic Dockyard and other notable city attractions, as well as the city's popular waterside and leisure destination, Gunwharf Quays.

- 90 en-suite classic bedrooms
- Swimming pool with hydrojets (fully accessible), sauna and spa pool
- Snooker and skittle alleys
- Horatio's Restaurant, Compass Café and Victory Bar
- Function rooms; suitable for conferences and licensed for weddings

Price: £80 – £140 per room per night

Rooms: 90 **En suite:** All

Facilities:



Follow us on Twitter
for the latest news and
events @visitportsmouth

Follow Portsmouth
on Facebook.com/
portsmouththewaterfrontcity

Experience Portsmouth
on YouTube – search for
'Visit Portsmouth'

PortCreative

The Official Portsmouth Visitor Guide is designed by **PortCreative**, a full-service creative agency based on the south coast of England. If you like the visitor guide, then let's talk. We would love to work with you!

📞 023 9283 4086 ✉ hello@portcreative.co.uk 🌐 www.portcreative.co.uk

ESK VALE GUEST HOUSE

Map page 24
Ref E7

39 Granada Road, Southsea, Portsmouth, PO4 ORD
T: 023 9286 2639 **E:** enquiries@eskvaleguesthouse.co.uk
W: www.eskvaleguesthouse.co.uk

Just a 2 minute walk from Southsea beach and local attractions.

Our aim is to offer you a warm welcome, a pleasant stay and a good old English breakfast to start the day.

Price: £40–£100 per room per night

Rooms: 8 **En suite:** 6

Facilities:



REES HALL

Map page 24
Ref C5

Southsea Terrace, Southsea, Portsmouth, PO5 3AP
T: 023 9284 4884 **E:** reservations@port.ac.uk
W: www.eventportsmouth.co.uk

Rees Hall is a modern building located on Southsea seafront with views across Southsea Common and the Solent. It is also a short distance from Gunwharf Quays and the Historic Dockyard.

The award-winning Rees Hall provides the ideal venue for a leisure break or business trip, with a wide range of quality comfortable en-suite rooms, two guest lounges, bar and quiet courtyard garden.

- Full English breakfast and free WiFi included.
- Coach parties welcome.
- Conference facilities available.
- Rooms available from June to September.

Price: From £60–£90 per room per night

Rooms: 250 **En suite:** All

Facilities:



LAKESIDE APARTMENTS

Map page 25
Ref F6

5 Helena Road, Southsea, Portsmouth, PO4 9RH
T: 07810 436981/023 9282 0690 **E:** info@lakesidesouthsea.com
W: www.lakesidesouthsea.com

Price: From £300–£360 per unit per week

Units: 6 **Sleeping capacity:** 2/+child

Facilities:



Quiet, fully furnished self-catering apartments, great location for visiting all the fantastic sites of Portsmouth. Five-minute walk from the Seafront, Canoe Lake, Museums – Ideal base for all things nautical.

Open all year round, Pets welcomed, all major credit cards accepted.

Weekly bookings Friday – Friday.

Non-smoking establishment.

Important note: Whilst every effort has been made to ensure that the information in this publication is correct, Portsmouth City Council cannot guarantee complete accuracy of the information and all liability for loss, disappointment, negligence or other damages caused by this publication, is hereby excluded. As changes often occur after press date, it is advisable to confirm the information given with the relevant organisation. All information is for guidance only, and was current as of December 2020.



Various locations in Southsea

T: 07763 803554 **E:** jane@homefromhomeportsmouth.com

W: www.homefromhomeportsmouth.com

Home from Home, Portsmouth Ltd, offers a selection of serviced and holiday apartments close to the beach in Southsea. Our properties vary in size and location and our more luxurious apartments offer balconies, sea views, en-suites and private parking!

All our apartments are all fully equipped, including wifi, and washing machines, some include Netflix, tumble dryers and dishwashers to make your stay a real home from home while you are away.

Where we don't have private parking, we provide you passes, so you can park in the residents zones in the street outside.

We also work with local suppliers, who provide our own blend of coffee and discount vouchers for eating out.

Please have a look at our website, if you click on the properties tab you can have a sneak peak at our properties and check availability, but if you can't find what you need, just let us know your requirements.

I hope you find what you are looking for on our site, if not, please do not hesitate to contact us directly.

Price: From £80 – £350 per unit per night

Units: 9 **Sleeping capacity:** 1 – 9

Facilities:



DUBAI IS OPEN



FLY BETTER

It's now quarantine-free in Dubai and when you return home in the UK. Travel with complete peace of mind as every flight includes multi-risk travel insurance, flexible ticket options should your plans change and PCR testing upon arrival at Dubai International Airport.


Emirates

DID YOU KNOW?
**WE HAVE MORE ROUTES TO EUROPE
THAN ANY OTHER UK PORT.**

Great sailings start from Portsmouth



VISIT [PORTSMOUTH-PORT.CO.UK](https://www.portsmouth-port.co.uk)

RETURN OF A D-DAY HERO

LCT 7074 NOW OPEN
AT THE D-DAY STORY PORTSMOUTH

DISCOVER MORE AND BUY TICKETS AT
[THEDAYSTORY.COM](https://thedaystory.com)

LCT 7074 is a joint project between the National Museum of the Royal Navy and The D-Day Story, with funding from the National Lottery Heritage Fund.



THE D-DAY STORY
PORTSMOUTH

THE
NATIONAL
MUSEUM



HERITAGE
FUND